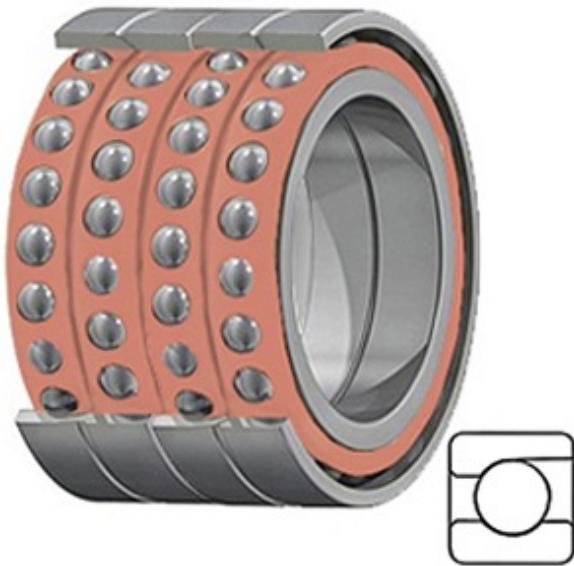




# Machinery Parts Industry Co., Ltd.



2MM9105WI QUH Bearing 2D drawings and 3D CAD models

0.984 Inch | 25 Millimeter x 1.85 Inch | 47 Millimeter x 1.89 Inch | 48 Millimeter TIMKEN 2MM9105WI QUH Precision Ball Bearings

Bearing No. 2MM9105WI QUH

Category	Precision Ball Bearings
Inventory	0.0
Manufacturer Name	TIMKEN
Minimum Buy Quantity	N/A
Weight	0.308
EAN	0087796253919
Product Group	B04270
Enclosure	Open
Precision Class	ABEC 7   ISO P4
Material - Ball	Steel
Number of Bearings	4 (1 Quadruplex Set)
Contact Angle	15 Degree
Preload	Heavy
Raceway Style	1 Rib Outer Ring
Cage Material	Phenolic
Rolling Element	Ball Bearing
Mounting Arrangement	Quadruplex-Universal
Flush Ground	Yes
Inch - Metric	Metric
Other Features	Single Row   Angular Contact   Super High Precision
Long Description	25MM Bore; 47MM Outside Diameter; 48MM Width; Open Enclosure; ABEC 7   ISO P4 Precision;



## Machinery Parts Industry Co., Ltd.

	Steel Ball Material; 4 (1 Quadruplex Set) Bearings; 15 Degree Contact Angle; Phenolic Cage Material; 1 Rib Oute
Category	Precision Ball Bearings
UNSPSC	31171531
Harmonized Tariff Code	8482.10.50.28
Noun	Bearing
Keyword String	Angular Contact Ball
Manufacturer URL	<a href="http://www.timken.com">http://www.timken.com</a>
Manufacturer Item Number	2MM9105WI QUH
Weight / LBS	0.68
d	0.984 Inch   25 Millimeter
B	1.89 Inch   48 Millimeter
D	1.85 Inch   47 Millimeter