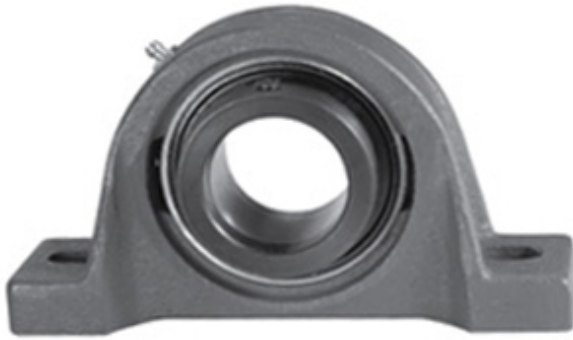




Machinery Parts Industry Co., Ltd.

1.938 Inch | 49.225 Millimeter x 2.469 Inch | 62.7
 Millimeter x 2.188 Inch | 55.575 Millimeter LINK
 BELT PL3Y231E3 Pillow Block Bearings



Bearing No. PL3Y231E3

PL3Y231E3 Bearing 2D drawings and 3D CAD models

Category	Pillow Block Bearings
Inventory	0.0
Manufacturer Name	REXNORD
Minimum Buy Quantity	N/A
Weight	2.82
EAN	0662327119256
Product Group	M06110
Number of Mounting Holes	2
Mounting Method	Eccentric Collar
Housing Style	2 Bolt Pillow Block
Rolling Element	Ball Bearing
Housing Material	Cast Iron
Expansion / Non-expansion	Non-expansion
Mounting Bolts	5/8 Inch
Relubricatable	Yes
Insert Part Number	YG231E3L
Seals	Triple Lip Contact
Housing Configuration	1 Piece Solid
Inch - Metric	Inch
Other Features	Single Row Standard Duty Low Base Wide Inner Race
Long Description	2 Bolt Pillow Block; 1-15/16" Bore; 2-3/16" Base to Center Height; Eccentric Collar Mount; Ball Bearing;



Machinery Parts Industry Co., Ltd.

	Relubricatable; Cast Iron; Triple Lip Contact; Non- expansion
Category	Pillow Block
UNSPSC	31171511
Harmonized Tariff Code	8483.20.40.40
Noun	Bearing
Keyword String	Pillow Block
Manufacturer URL	http://www.rexnord.com
Manufacturer Item Number	PL3Y231E3
Manufacturer Internal Number	5811925
Weight / LBS	6.2
Bolt Spacing Minimum	0 Inch 0Millimeter
d	1.938 Inch 49.225 Millimeter
B	2.188 Inch 55.575 Millimeter
Actual Bolt Center to Center	6.2 Inch 157Millimeter
D	2.469 Inch 62.7 Millimeter
Nominal Bolt Center to Center	6.3 Inch 160 Millimeter
Bolt Spacing Maximum	0 Inch 0Millimeter